

Sumoto

OY6

6" Rewindable oil filled submersible motor



The OY6 oil-filled submersible motor is engineered for demanding water supply applications, offering robust performance and extended durability. Designed for use in 6-inch and larger diameter wells, it is an excellent choice for agricultural, industrial, and municipal water systems. Filled with high-quality, dielectric, non-toxic oil, this motor ensures safe operation in potable water applications while providing efficient cooling and superior insulation. The oil-filled design guarantees excellent thermal exchange, reducing operating temperatures and enhancing motor life. At Sumoto, we have been producing these reliable 6-inch oil-filled motors since 1996, continuously improving their design and performance to meet the highest standards of durability and efficiency.

TECHNICAL FEATURES

- Rewindable.
- Upper bracket: Nickel plated cast iron. SS316 available.
- Motor case: SS 304.
- Motor shaft: SS 304.
- Shaft extension and coupling: NEMA standard.
- High quality radial and thrust ball bearings.
- Winding: enameled copper - Class F insulation.
- Degree of protection: IP68/Class B.
- Max temp. 35° with water cooling flow min. 0.16 m/s.
- Max depth immersion: 150 m.
- Nos. of start per hour: max 30 at regular intervals.
- Over-dimensioned sand slinger.
- Mechanical seal: graphite/ceramic. SiC/SiC or SiC/Al mechanical seal available as option.
- Coolant: dielectric non toxic high quality lubricant.
- Motor cable length: 2,8 to 4 m according to motor size (3 wires plus ground).
- Voltage variation: +/-10%.
- Starting method: D.O.L / Star-Delta.
- CSCR single phase motor available.
- Suitable for horizontal operation.

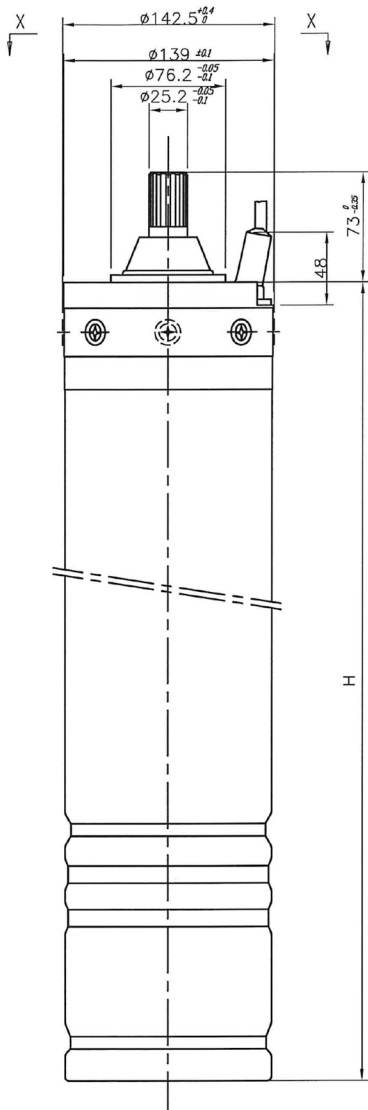
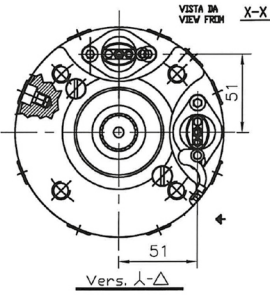
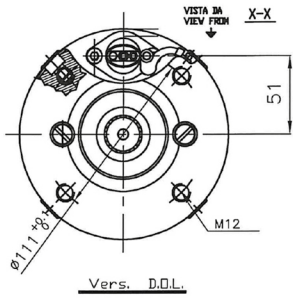
MOTOR RANGE VERSIONS

- Single Phase: 4kW (5.5hp) to 11kW (15hp), 220-230V / 50Hz (or 60Hz)
- Three Phase: 4kW (5.5hp) to 37kW (50hp), 380-415V / 50Hz - 460V / 60 Hz
- Axial thrust: - 10.000 N from 4kW to 22kW
 - 20.000 N from 30kW to 37kW.

Other voltage and frequencies available upon request.



TECHNICAL DRAWING



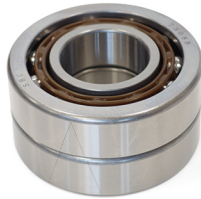
OY6 CONSTRUCTION DETAILS



The motor features a removable cable connector for quick and easy maintenance. Our flat blue power cable, approved for use with drinking water, is certified according to ACS, KTW, and WRAS. Upon request, a stranded cable version is also available.

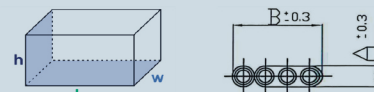


The upper bracket can be supplied in various materials and finishes to suit different application requirements: a Standard version in nickel-plated cast iron, or entirely in stainless steel 304 or 316 for enhanced corrosion resistance.



The OY6 series features precision-engineered thrust and radial ball bearings, capable of handling high axial and radial loads. This configuration guarantees reliable performance and long service life, even under harsh conditions.

PACKAGING WEIGHT & DIMENSIONS



Type	kW	Hp	Thrust Load	Weight kg	Height cm	Width cm	Length	Cable		
								Sec. mm ²	A mm	B mm
OY6 550	4	5,5	10000 N	32	19,5	18	74	4	6,5	20,5
OY6 750	5,5	7,5	10000 N	40	19,5	18	74	4	6,5	20,5
OY6 1000	7,5	10	10000 N	42	19,5	18	74	4	6,5	20,5
OY6 1250	9,2	12,5	10000 N	45	19,5	18	74	4	6,5	20,5
OY6 1500	11	15	10000 N	48	19,5	18	90	4	6,5	20,5
OY6 1750	12,8	17,5	10000 N	50	19,5	18	90	4	6,5	20,5
OY6 2000	15	20	10000 N	54	19,5	18	90	4	6,5	20,5
OY6 2500	18,5	25	10000 N	65	19,5	18	100	6	7	23,5
OY6 3000	22	30	10000 N	70	19,5	18	100	6	7	23,5
OY6 4000	30	40	20000 N	108	35	24	118	8	8	27,5
OY6 5000	37	50	20000 N	122	35	24	130	8	8	27,5



50Hz.

THREE PHASE - 380/400/415V

Type	kW	Hp	Thrust Load	Weight	Height	In	Istart	Imax	RPM	Cosφ	Ts/Tn	EFF%	R mot [Ω]	Rf2 leads [Ω]
			N	Kg	mm	Amp								
OY6 550 380	4	5,5	10000	32	540	9,8	54	10,9	2850	0,81	2,3	76	2,71	4,13
OY6 550 400	4	5,5	10000	32	540	10,0	54	11,1	2860	0,76	2,4	77	2,71	4,13
OY6 550 415	4	5,5	10000	32	540	10,3	54	11,4	2870	0,71	2,6	76	2,71	4,13
OY6 750 380	5,5	7,5	10000	40	570	12,6	64	14,0	2850	0,84	2,8	77	2,32	3,26
OY6 750 400	5,5	7,5	10000	40	570	12,5	64	13,9	2860	0,82	3,0	78	2,32	3,26
OY6 750 415	5,5	7,5	10000	40	570	12,4	64	13,8	2870	0,8	3,0	77	2,32	3,26
OY6 1000 380	7,5	10	10000	42	600	17,2	78	19,1	2850	0,85	1,8	78	1,84	2,66
OY6 1000 400	7,5	10	10000	42	600	16,9	78	18,8	2860	0,82	2,5	77	1,84	2,66
OY6 1000 415	7,5	10	10000	42	600	16,5	78	18,3	2870	0,82	2,8	77	1,84	2,66
OY6 1250 380	9,2	12,5	10000	45	600	22,0	95	24,4	2850	0,82	2,4	79	1,82	2,67
OY6 1250 400	9,2	12,5	10000	45	600	21,5	95	23,9	2860	0,81	2,4	80,2	1,82	2,67
OY6 1250 415	9,2	12,5	10000	45	600	21,0	95	23,3	2870	0,79	2,6	78	1,82	2,67
OY6 1500 380	11	15	10000	48	700	24,1	121	26,8	2850	0,84	2,4	84	1,25	1,72
OY6 1500 400	11	15	10000	48	700	23,7	121	26,3	2860	0,83	2,4	83	1,25	1,72
OY6 1500 415	11	15	10000	48	700	23,9	121	25,6	2870	0,8	2,4	80	1,25	1,72
OY6 1750 380	12,8	17,5	10000	50	700	28,0	145	30,0	2840	0,86	2,3	81	1,24	1,76
OY6 1750 400	12,8	17,5	10000	50	700	27,8	145	29,7	2850	0,84	2,4	82	1,24	1,76
OY6 1750 415	12,8	17,5	10000	50	700	27,5	145	29,4	2860	0,82	2,4	81	1,24	1,76
OY6 2000 380	15	20	10000	54	760	31,4	160	33,6	2830	0,86	2,3	81	0,97	1,37
OY6 2000 400	15	20	10000	54	760	30,4	160	32,5	2840	0,85	2,5	82	0,97	1,37
OY6 2000 415	15	20	10000	54	760	29,7	160	31,8	2860	0,84	2,5	81	0,97	1,37
OY6 2500 380	18,5	25	10000	65	830	41,5	225	44,4	2830	0,86	2,1	80	0,92	1,33
OY6 2500 400	18,5	25	10000	65	830	38,3	225	41,0	2850	0,85	2,1	82	0,92	1,33
OY6 2500 415	18,5	25	10000	65	830	36,6	225	39,2	2860	0,82	2,2	83	0,92	1,33
OY6 3000 380	22	30	10000	70	890	46,5	250	49,8	2830	0,86	2,0	83	0,78	1,09
OY6 3000 400	22	30	10000	70	890	44,0	250	47,1	2850	0,86	2,0	83	0,78	1,09
OY6 3000 415	22	30	10000	70	890	44,5	250	47,6	2860	0,84	2,1	82	0,78	1,09
OY6 4000 380	30	40	20000	90	1030	63,0	330	67,4	2840	0,84	2,0	85	0,61	0,78
OY6 4000 400	30	40	20000	90	1030	62,0	330	66,3	2860	0,86	2,0	86	0,61	0,78
OY6 4000 415	30	40	20000	90	1030	58,0	330	62,1	2850	0,88	2,0	86	0,61	0,78
OY6 5000 380	37	50	20000	101	1170	74,0	400	79,2	2850	0,88	2,0	85	0,53	0,65
OY6 5000 400	37	50	20000	101	1170	72,0	400	77,0	2860	0,87	2,0	86	0,53	0,65
OY6 5000 415	37	50	20000	101	1170	71,0	400	76,0	2870	0,86	2,0	85	0,53	0,65

SINGLE PHASE - 230V

Type	kW	Hp	Thrust Load	Weight	Height	In	Istart	Imax	RPM	Cosφ	Ts/Tn	EFF%	Crun	Cstart	Rm [Ω]	Ra [Ω]
			N	Kg	mm	Amp	μF									
OY6 750	5,5	7,5	10000	42	600	34	175	37	2880	0,94	74	1,2	120	350	0,44	0,83
OY6 1000	7,5	10	10000	48	700	46	242	48,5	2880	0,94	76	1,2	140	350	0,28	0,49
OY6 1500	11	15	10000	54	760	66	330	70	2860	0,96	76	1,2	160	380	0,26	0,39



60Hz.

THREE PHASE - 380V

Type	kW	Hp	Thrust Load	Weight	Height	In	Istart	RPM	Cosφ	Ts/Tn	EFF%	S.F.	R mot [Ω]	Rf 2 leads [Ω]
			N	Kg	mm	Amp								
OY6 550	4	5,5	10000	32	540	9,6	10,7	3440	0,86	2,4	74	1,15	0,80	0,40
OY6 750	5,5	7,5	10000	40	570	13,0	15,1	3450	0,82	2,4	79	1,15	1,35	0,70
OY6 1000	7,5	10	10000	42	600	17,4	19,2	3440	0,82	2,3	80	1,15	1,14	0,57
OY6 1250	9,2	12,5	10000	45	600	20,2	22,4	3450	0,84	2,3	81	1,15	1,57	0,79
OY6 1500	11	15	10000	48	700	25,6	29,4	3460	0,81	2,1	82	1,15	0,96	0,48
OY6 1750	12,8	17,5	10000	50	700	27,5	31,1	3450	0,85	2,1	82	1,15	0,93	0,47
OY6 2000	15	20	10000	54	760	34,1	38,0	3450	0,81	2,1	83	1,15	0,74	0,37
OY6 2500	18,5	25	10000	65	830	39,8	45,6	3460	0,83	2,1	84	1,15	0,69	0,35
OY6 3000	22	30	10000	70	890	47,3	54,6	3450	0,83	2,1	85	1,15	0,65	0,33
OY6 4000	30	40	20000	90	1030	66,2	75,0	3450	0,81	2,0	85	1,15	0,53	0,37
OY6 5000	37	50	20000	101	1170	84,5	96,0	3440	0,82	2,0	82	1,15	0,21	0,31

THREE PHASE - 220V

OY6 550	4	5,5	10000	32	540	15,9	16,8	3440	0,83	2,4	74	1,15	0,80	0,40
OY6 750	5,5	7,5	10000	40	570	23,5	26,2	3450	0,82	2,4	72		0,65	0,33
OY6 1000	7,5	10	10000	42	600	29,0	32,8	3440	0,81	2,3	80		0,69	0,35
OY6 1250	9,2	12,5	10000	45	600	35,0	38,8	3450	0,82	2,3	80,2		0,71	0,36
OY6 1500	11	15	10000	48	700	39,8	47,2	3440	0,85	2,1	82		0,46	0,23
OY6 1750	12,8	17,5	10000	50	700	47,0	53,8	3450	0,83	2,1	82		0,45	0,23
OY6 2000	15	20	10000	54	760	54,5	61,5	3450	0,85	2,1	82		0,38	0,19
OY6 2500	18,5	25	10000	65	830	67,5	76,0	3460	0,82	2,1	84		0,39	0,20
OY6 3000	22	30	10000	70	890	80,2	91,0	3450	0,82	2,1	85		0,32	0,16
OY6 4000	30	40	20000	90	1030	115,0	130,0	3450	0,81	2,0	85		0,12	0,06

THREE PHASE - 460V

OY6 550	4	5,5	10000	32	540	9,6	9,8	3440	0,72	2,4	76	1,15	2,78	3,83
OY6 750	5,5	7,5	10000	40	570	11,0	12,6	3450	0,82	2,4	78		2,4	2,55
OY6 1000	7,5	10	10000	42	600	14,9	16,8	3440	0,82	2,3	77		1,78	2,47
OY6 1250	9,2	12,5	10000	45	600	19,8	22,4	3440	0,81	2,3	78		1,73	2,59
OY6 1500	11	15	10000	48	700	21,0	24,0	3440	0,81	2,1	80		1,19	1,68
OY6 1750	12,8	17,5	10000	50	700	25,1	28,2	3440	0,86	2,1	81		1,26	1,62
OY6 2000	15	20	10000	54	760	27,2	30,6	3450	0,84	2,1	81		0,94	1,31
OY6 2500	18,5	25	10000	65	830	33,8	38,0	3440	0,84	2,1	82		0,88	1,32
OY6 3000	22	30	10000	70	890	40,2	45,5	3440	0,83	2,1	83		0,74	1,04
OY6 4000	30	40	20000	90	1030	53,0	61,8	3450	0,84	2,0	85		0,38	0,56
OY6 5000	37	50	20000	101	1170	72,0	76,0	3440	0,83	2,0	85		0,31	0,45

SINGLE PHASE - 230V

Type	kW	Hp	Thrust Load	Weight	Height	In	Istart	Imax	RPM	Cosφ	Ts/Tn	EFF%	Crun	Cstart	Rm [Ω]	Ra [Ω]
			N	Kg	mm	Amp	μF									
OY6 550	4	5,5	10000	32	540	26,0	160	32,0	3470	0,95	1,3	72	80	250	0,4	0,92
OY6 750	5,5	7,5	10000	40	570	36,0	186	40,0	3480	0,95	1,3	73	100	300	0,36	0,81
OY6 1000	7,5	10	10000	42	600	47,0	242	52,0	3460	0,96	1,2	75	70	350	0,23	0,48
OY6 1500	11	15	10000	45	600	66,0	330	77,0	3450	0,97	1,3	76	135	380	0,19	0,35



MADE IN ITALY

